

Delivery Robot DeliRo™



<https://www.zmp.co.jp/en/products/lrb/deliro>

Unmanned Last mile logistics

- ✓ Autonomous Delivery robot
- ✓ Remote monitoring and operations are possible
- ✓ Safe and steady navigation to the destination with eyes and voice communication.

DeliRo™

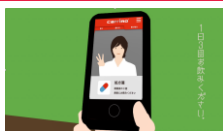
デリロ™



Concept



Delivery of daily necessities



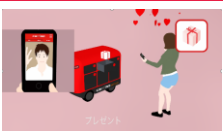
Delivery of medicine



Collection/delivery of laundry



Mobile Catering

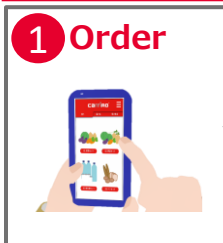


Gifts



Patrol etc.

Service Flow



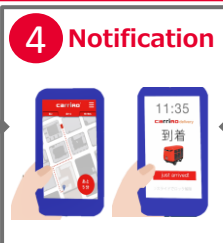
1 Order



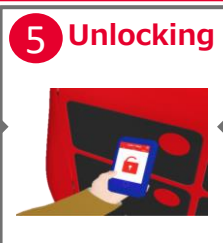
2 Ready for the shipment



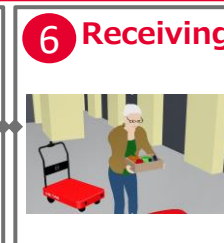
3 Delivery



4 Notification



5 Unlocking



6 Receiving

Size & Specification



Maximum load weight: 50 kg
 Level difference: 5 cm
 Climbing an upward slope: 8 degrees
 Driving time: About 4 hours
 ※Depends on the travelling circumstances
 Charging time : About 1 hour

Color Variation

4 different colors are color available



Cargo box -Choose the box in accordance with the application-



1 BOX



4 BOXES



8 BOXES

Width	52.0cm	22.0cm	22.0cm
Height	40.0cm	37.9cm	16.9cm
Depth	52.0cm	25.5cm	24.5cm

ZMP Inc. www.zmp.co.jp

Sumitomo Fudosan Koishikawa Bldg., 5-41-10 Koishikawa, Bunkyo-ku, Tokyo 112-0002, Japan
 TEL (+81)3-5844-6210 FAX (+81)3-5802-6908 Mail info@zmp.co.jp

*Contents are subject to change without notice..

Please turn over.



Demonstration Details

World first! The delivery of convenience store commodity by delivery robot

With Lawson, Inc.

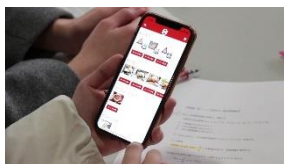
Held in Keio university, Shonan Fujisawa campus

In January 2019, ZMP conducted a demonstration of an unmanned delivery service using Autonomous delivery robot in Keio University, Shonan Fujisawa Campus.

The features of DeriRo realized in this demonstration:

[YouTube video] Convenience Store × Campus Life <https://www.youtube.com/watch?v=AI0I3ySnAiA>

To order by user



- Order convenience store commodity using smartphone apps
- Make reservations for delivery time and destination
- Complete the order by credit card settlement.

To pack commodity by store staff



- Confirm user's order by store dedicated apps
- Start the delivery after packing the box



- Set a box in accordance with the size of commodities
- Deliver the box which is capable of handling up to 50 kilograms

To deliver automatically by the delivery robot



- Detect objects around robot during the delivery and stop safely and temporarily. Retransmit again
- Detect human presence and talk to people

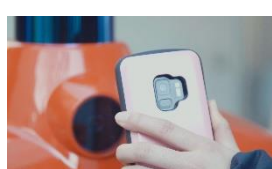


- Provide remote monitoring for the safe delivery of commodities
- Remote control according to the situation
- Manage and record all the processes using block chain

To get the product from the delivery robot



- Receive a notification on user's smartphone when it arrives close to the delivery place
- Communicate with the robot at the delivery place



- Unlock by using QR code on user's smartphone
- Go back to the store autonomously after the delivery

ZMP offers consulting service for practical use!



How to use the delivery robot

How to make and use the system

How to proceed with the processes

We offer you consulting service to use Delivery Robot.
Please feel free to contact us.

ZMP Inc. www.zmp.co.jp

Sumitomo Fudosan Koishikawa Bldg., 5-41-10 Koishikawa, Bunkyo-ku, Tokyo 112-0002, Japan
TEL (+81)3-5844-6210 FAX (+81)3-5802-6908 Mail info@zmp.co.jp

*Contents are subject to change without notice.

3D CAD Sponsor from 2002

